

# PARTS LIST FOR BERETTA M84FS CHEETAH

## "MAGNA" BLOW-BACK

JAPAN PATENT No: 2,561,421 / 2,561,429 / 2,561,444 / 2,567,906 / 2,597,828

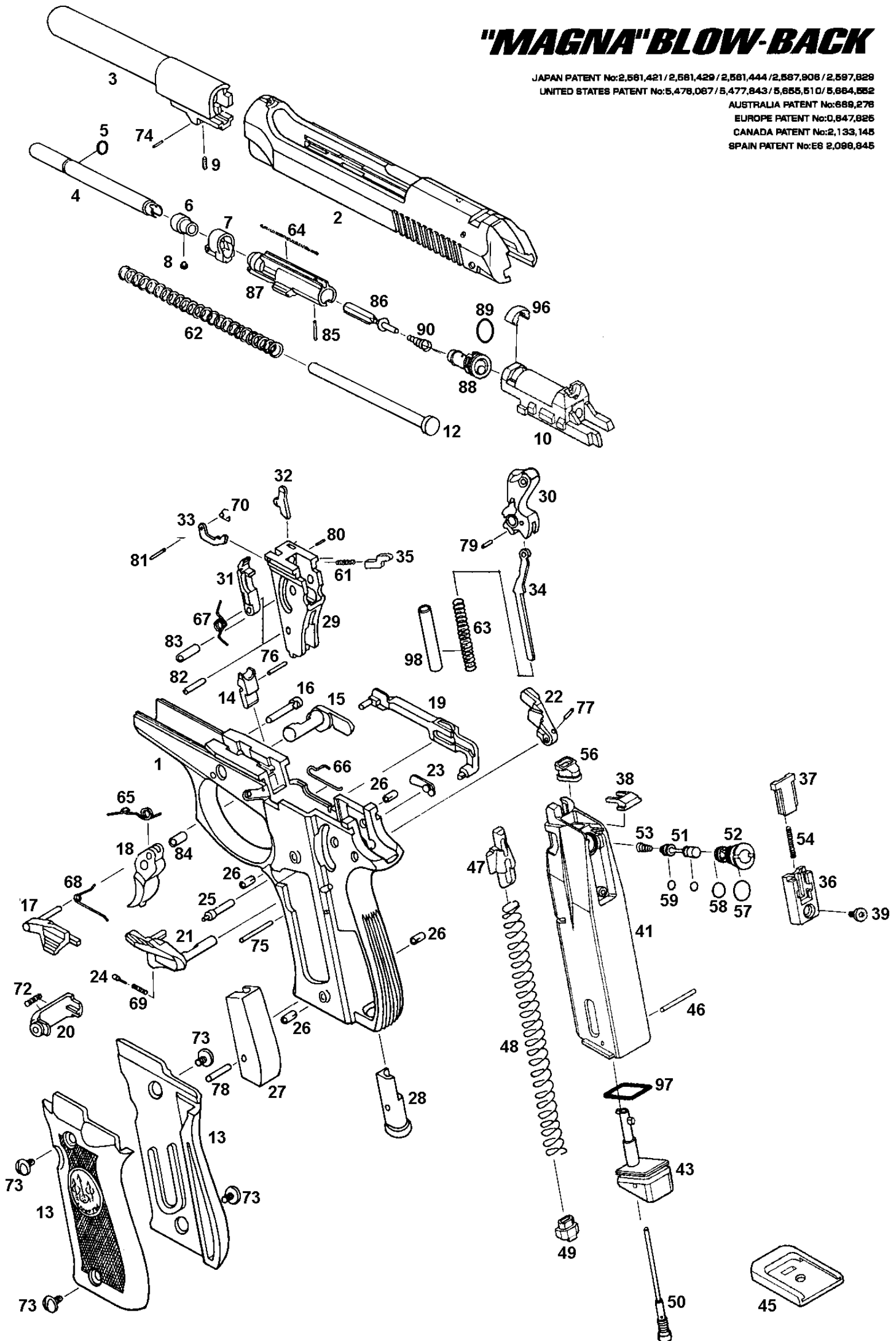
UNITED STATES PATENT No: 5,478,067 / 5,477,843 / 5,655,510 / 5,664,552

AUSTRALIA PATENT No: 689,276

EUROPE PATENT No: 0,647,825

CANADA PATENT No: 2,133,145

SPAIN PATENT No: ES 2,066,845



No,	Parts No	Parts name	Price (¥)	No,	Parts No	Parts name	Price (¥)
1	5201	Frame HW	3,000	49	5249	Magazine bumper plunger	200
2	5202	Slide ABS	2,900	50	5250	Charging valve	700
3	5203	Outer barrel	700	51	5251	Valve	800
4	5204	Hop inner barrel	2,000	52	5252	Valve sleeve	800
5	STD-024	Inner barrel O-ring (8x6x1)	100	53	5253	Valve spring	200
6	BTA-306	Hop rubber chamber	700	54	8460	Valve lock spring	100
7	5207	Chamber plate	300	56	5256	Gas route packing	200
8	5208	Hop plunger	200	57	STD-026	Valve sleeve packing (10x8x1)	100
9	STD-227	Hop adjust screw (M3x8HS)	100	58	STD-024	Valve sleeve packing (8x6x1)	100
10	5210	Breech block	1,200	59	STD-021	Valve packing (5x3x1)	100
12	5212	Recoil spring guide	700	61	5261	Firing plate spring	200
13	5213	Grip (L/R set)	800	62	5262	Recoil spring	300
14	5214	Feeding rump	300	63	5263	Main spring	300
15	5015	Takedown latch	500	64	5264	Nozzle spring	200
16	5016	Latch release button	200	65	5365	Trigger spring	200
17	5218	Slide stop	500	66	5266	Trigger bar spring	200
18	5218	Trigger	500	67	5067	Sear spring	200
19	5219	Trigger bar	500	68	5268	Slide stop spring	200
20	5220	Magazine catch	400	69	5269	Safety spring	100
21	5221	Safety lever E (left)	500	70	5070	Safety locker spring	200
22	5222	Safety lever (right)	400	72	BTA-135	Magazine catch spring	100
23	5023	De-cocking cum plate	300	73	BTA-127	Grip screw	100x4
24	5024	Safety plunger	100	74	STD-124	Chamber lock pin (2x5SP)	40
25	5025	Hammer pin	200	75	9545	Sear pin (2x22)	100
26	BTA-128	Grip nut	100x4	76	STD-129	Feeding rump pin (1.5x12SP)	100
27	5227	Flame weight	400	77	STD-145	Safety lock pin (2x8SP)	40
28	5028	Flame plug	300	78	5078	Flame plug pin (3x16)	100
29	5229	Chassis	1,000	79	STD-143	Hammer strut pin (2x6SP)	40
30	5030	Hammer	600	80	STD-150	Firing plate lock pin (1x12SP)	40
31	5031	Sear	300	81	STD-128	Safety lock pin (1.5x10SP)	100
32	5232	Valve lock release	200	82	5082	Sear sleeve	100
33	5233	Safety locker	200	83	5083	Hammer sleeve	100
34	5034	Hammer strut	200	84	5284	Trigger sleeve	100
35	5235	Firing plate	300	85	5285	Nozzle lock pin	100
36	5236	Valve guide	500	86	5086	Floating valve	300
37	5237	Valve lock	300	87	5287	Loading nozzle	1,000
38	5238	Packing guide	200	88	5288	Floating valve guide	500
39	5039	Valve guide screw	100	89	STD-009	Piston ring (S-10)	100
41	5241	Magazine case	2,500	90	5090	Floating valve spring	200
43	5243	Magazine base	500	94	5094	Wrench set (x2)	100
45	5245	Magazine bumper	500	95	5295	Slide Stop sleeve	100
46	5046	Magazine base pin	100	96	5296	Nozzle spring guide	200
47	5247	Magazine follower	300	97	5297	Magazine packing	200
48	5248	Magazine spring	300	98	5298	Hammer spring guide	300